

STEEL FOREVER & EVER
SINCE 1949



Cimolai S.p.A.

2026

ENG

**Cimolai is a highly specialized international player
in **complex steel structures**, with a strong
presence in major infrastructure and architectural
projects across **Europe** and **worldwide**.**

Business Areas

Cimolai operates worldwide in the design, supply, and assembly of **complex steel structures**, diversifying its activities in the fields of **Civil, Industrial, Military and Aerospace Engineering**, as well as in the **Energy and Naval** sector.

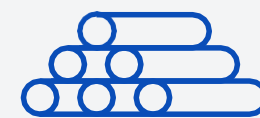
Other activities

EPC CONTRACT



Design and construction of works as a general contractor.

PIPES & COMMODITIES



Production of large-diameter and heavy-wall LSAW pipes, production of welded and cold-drawn stainless steel pipes. Production of welded beams.

SPECIAL ENVELOPE



Integrated systems for curtain walls and structural façades, special claddings.

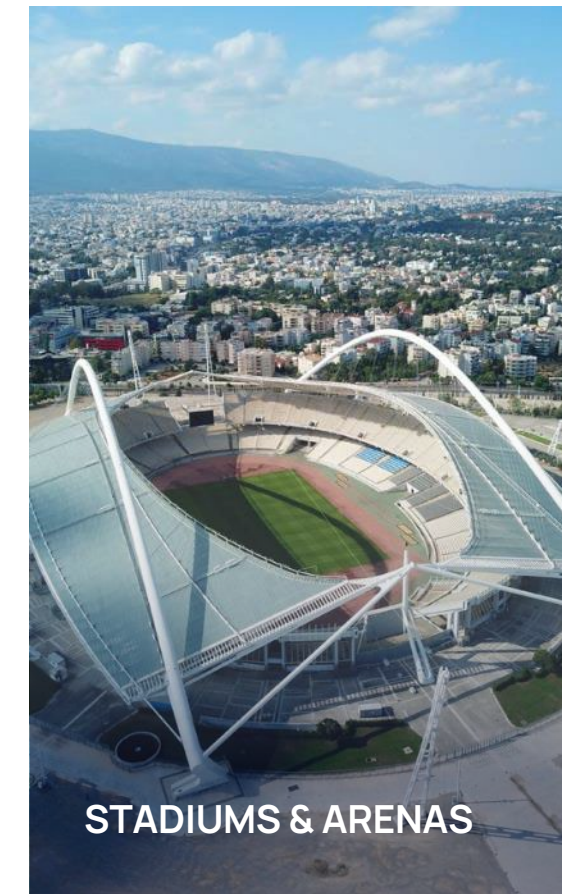
HEAVY LIFT



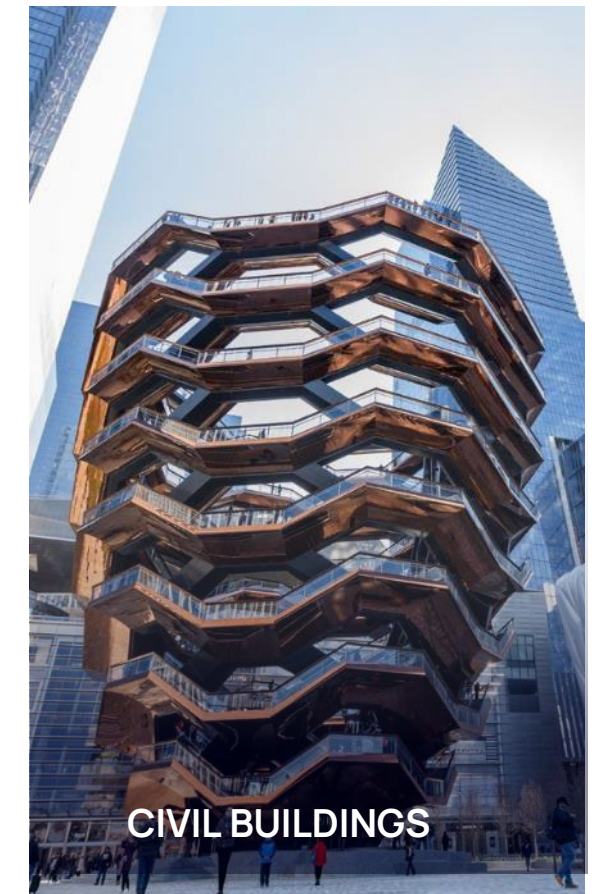
Design and execution of transport and lifting of oversize elements.



BRIDGES



STADIUMS & ARENAS



CIVIL BUILDINGS



INDUSTRIAL BUILDINGS



AEROSPACE

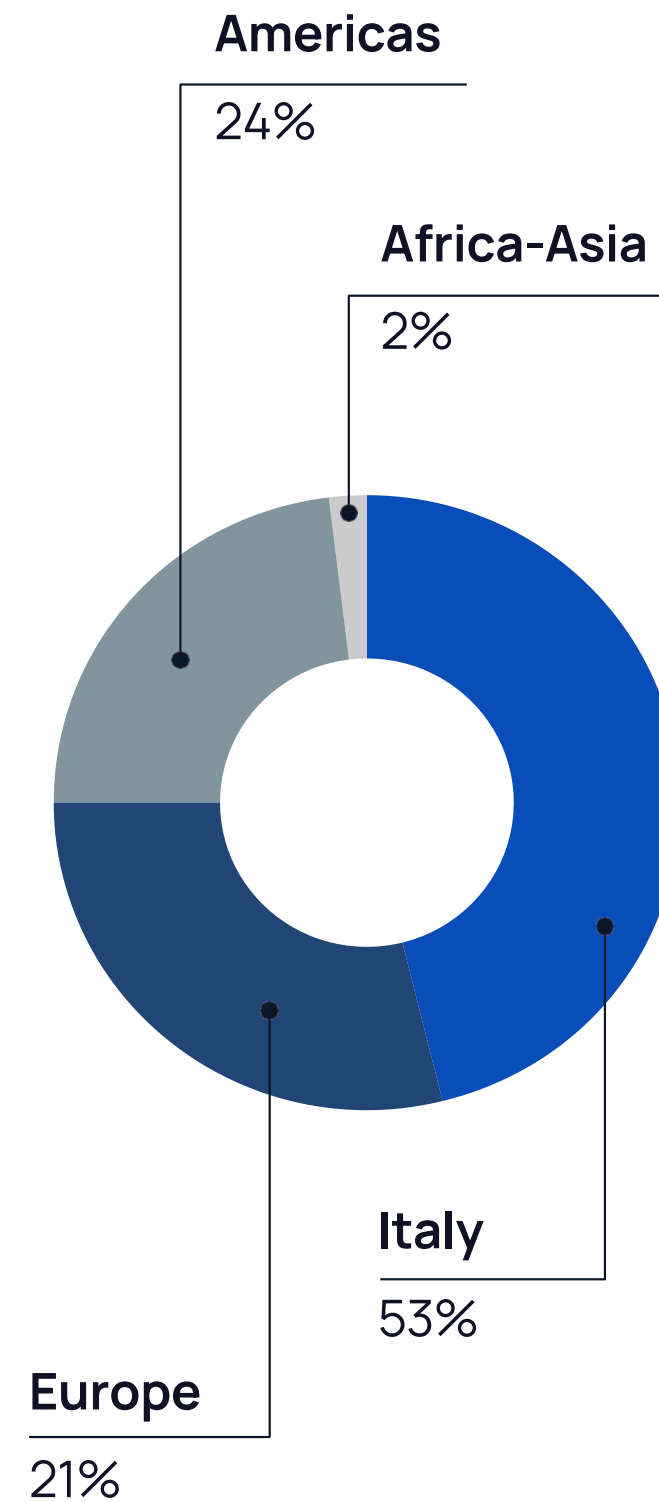
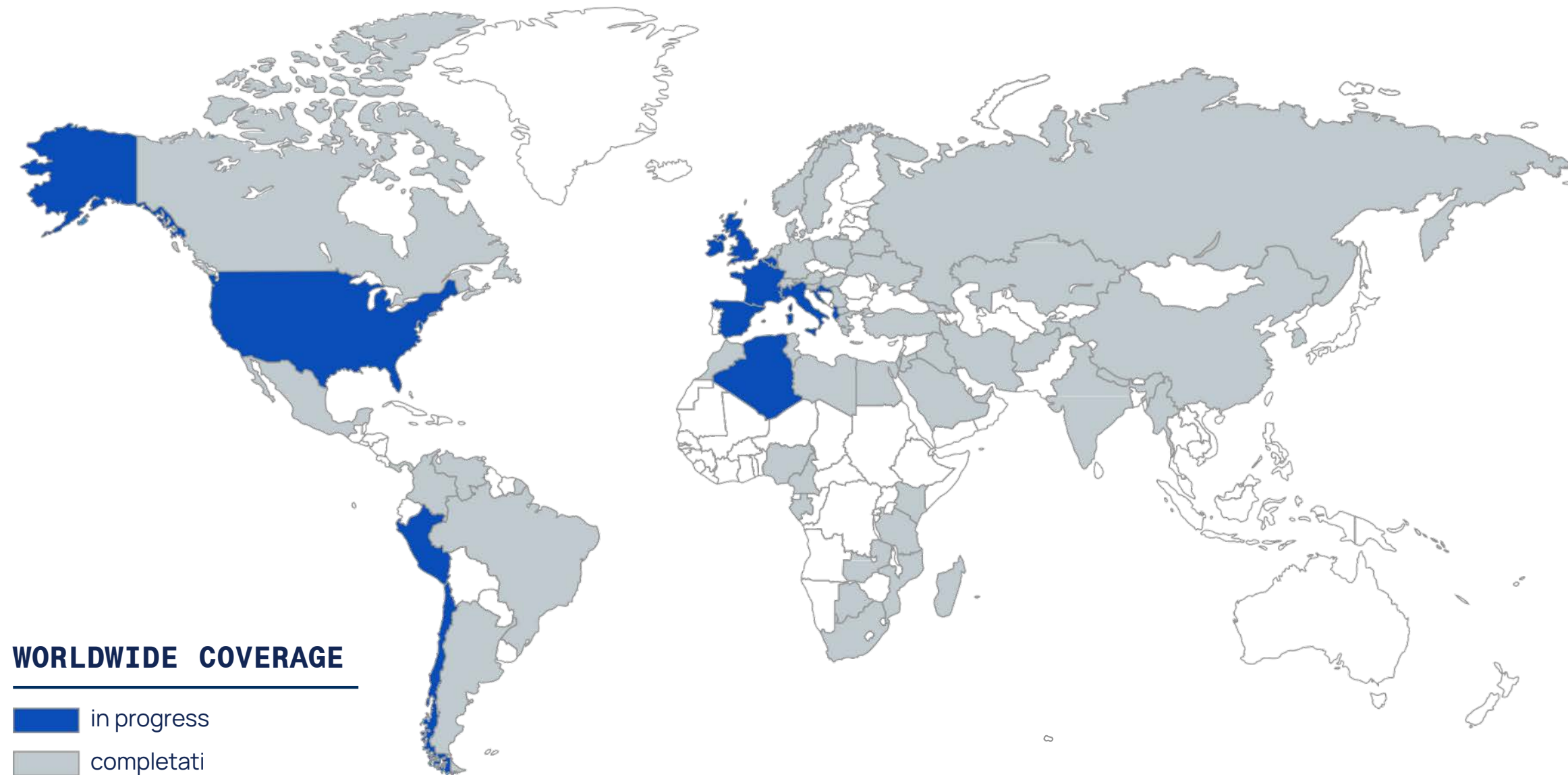


ENERGY



MARITIME & OFFSHORE

Main Data



 **1,500 employees**
CIMOLAI SPA

378 million € revenue
CIMOLAI SPA, 2025

800 million € order backlog
CIMOLAI SPA, 2025



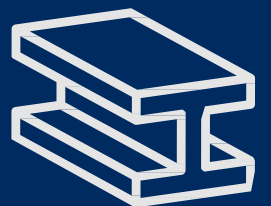
59 countries



910,000 sqm of industrial areas

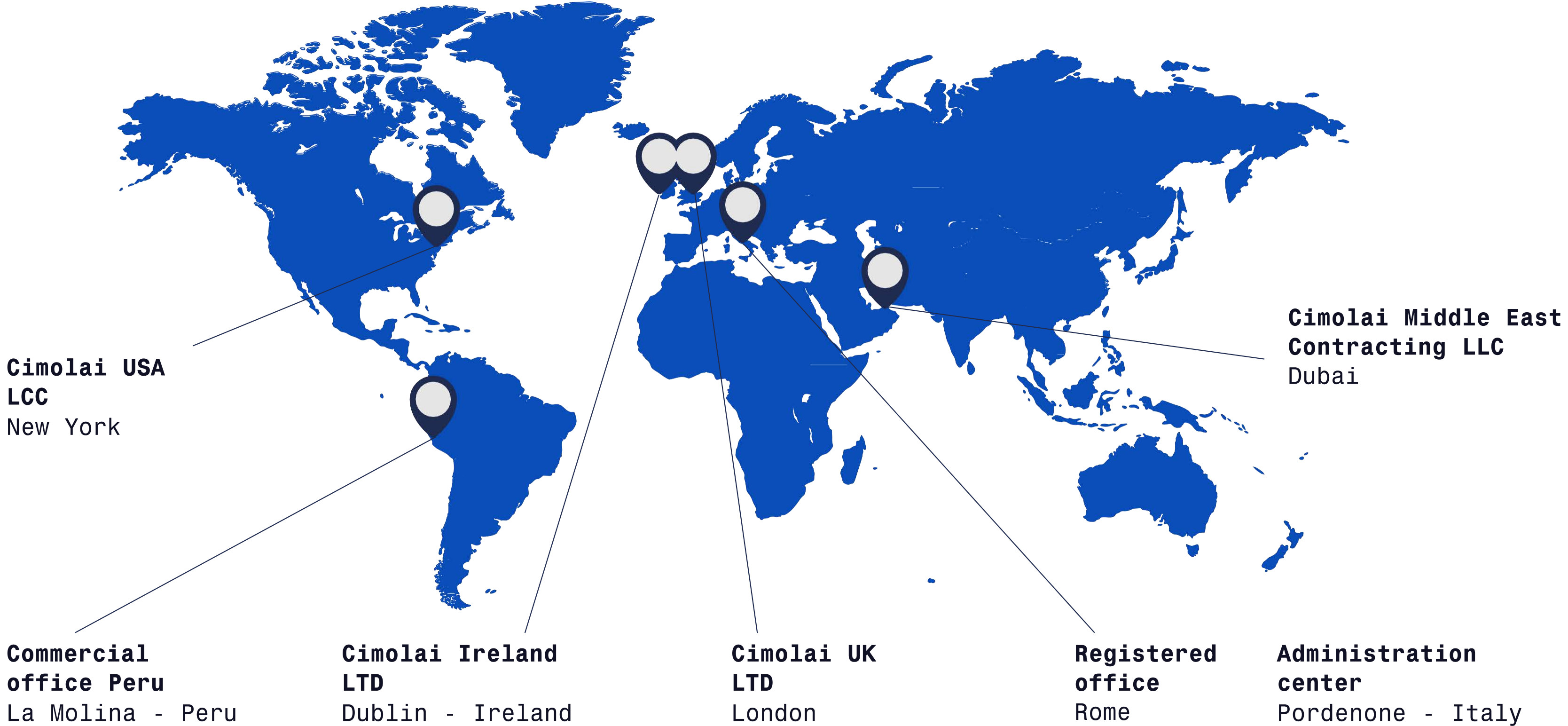


230,000 sqm of covered industrial areas



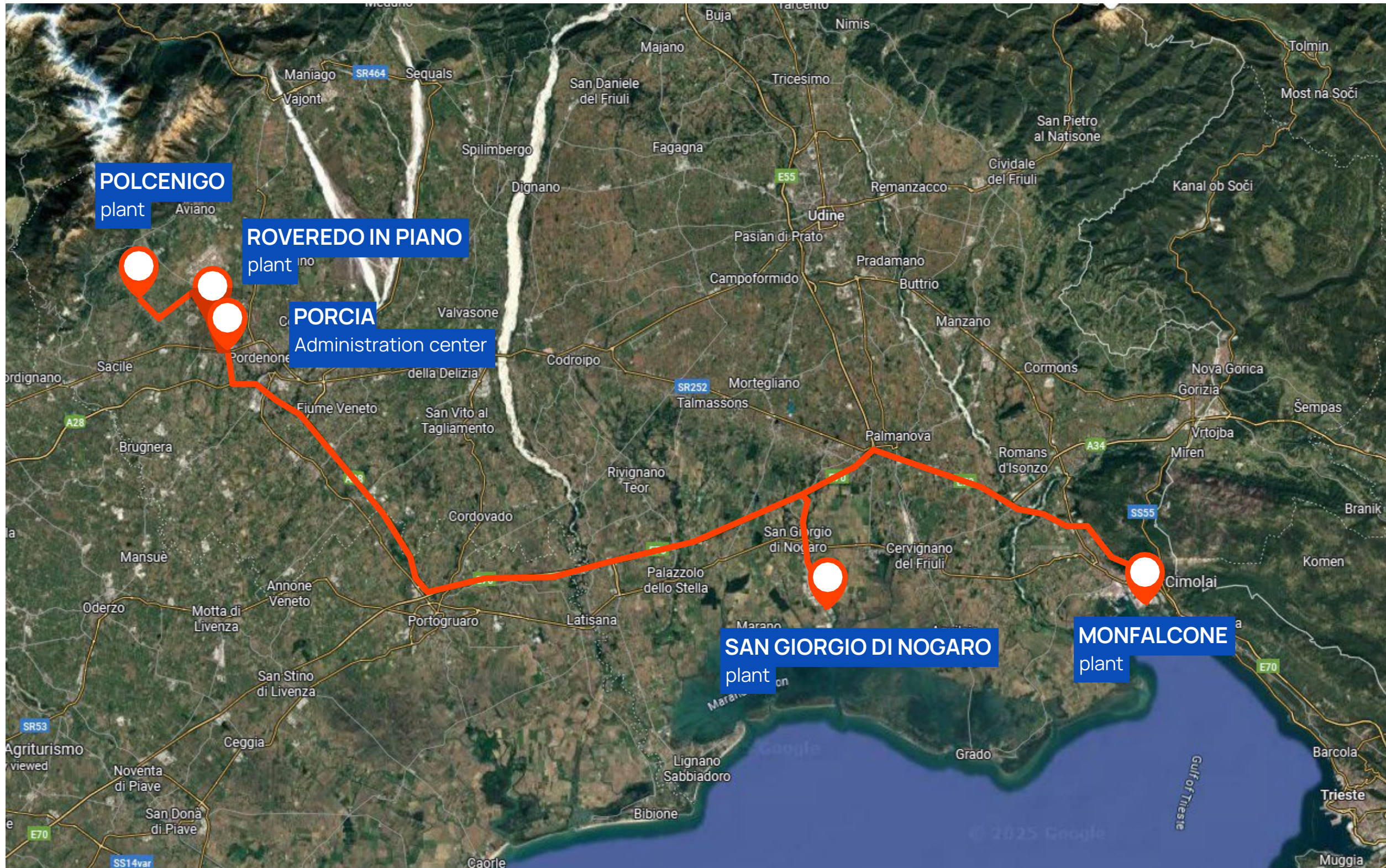
160,000 tons production capacity per year

Offices & Facilities



Offices & Facilities

Friuli Venezia Giulia (Italy)



PORCIA

Administration center

POLCENIGO

plant - 10 km to Porcia

ROVEREDO IN PIANO

plant - 5 km to Porcia

SAN GIORGIO DI NOGARO

plant - 65 km to Porcia

MONFALCONE

plant - 95 km to Porcia

Offices



Porcia (PN)

Headquarter
Administration center



Roma

Registered Office



Padova

Technical Office 2



Lecce

Technical Office 3

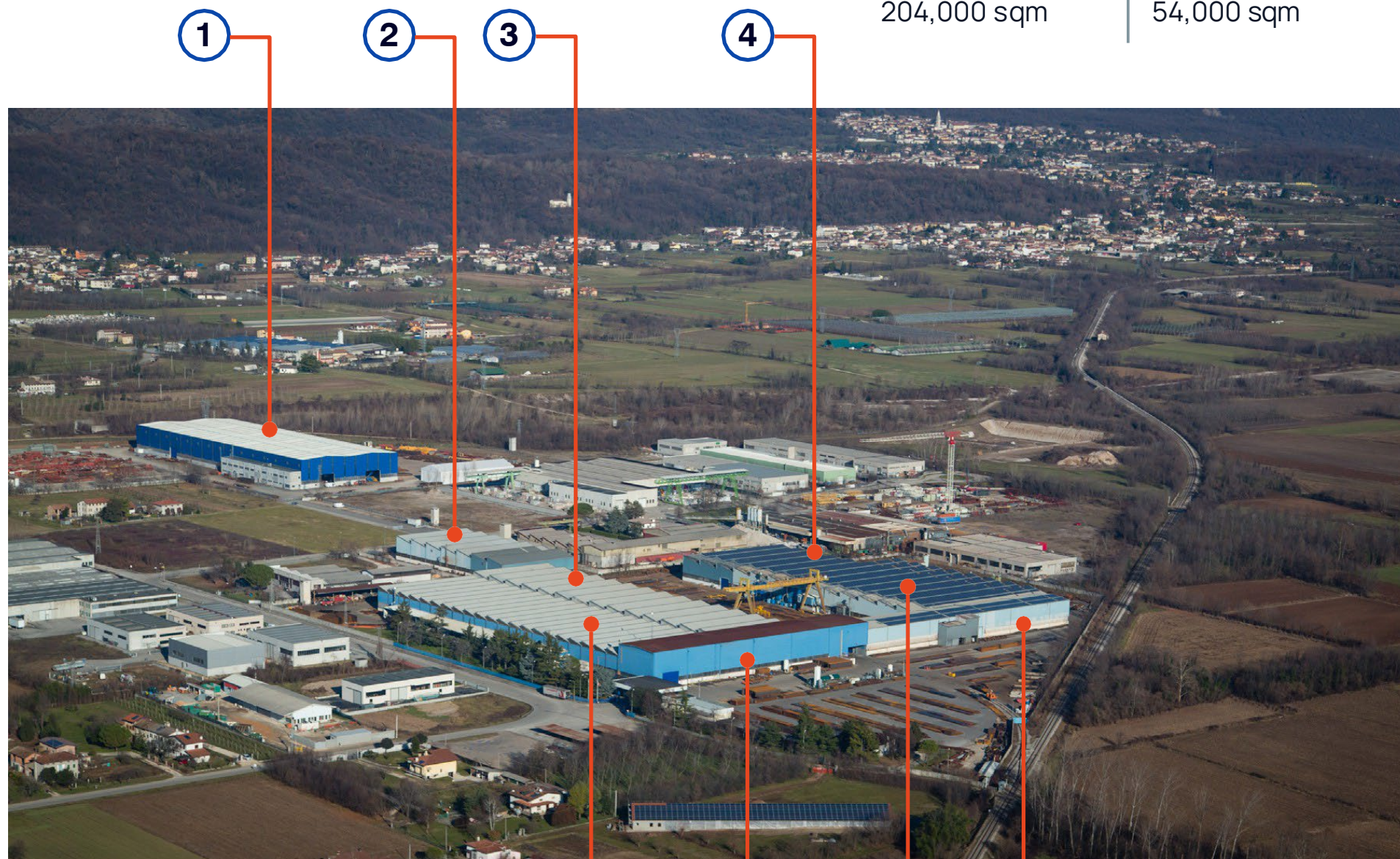
Facilities

POLCENIGO

POLCENIGO + ARTUGNA

TOTAL AREA
204,000 sqm

COVERED AREA
54,000 sqm



- ① ARTUGNA: Assembly & Welding
- ② Laser cutting
- ③ Grider assembly, Welding & drilling
- ④ Painting & Sandblasting
- ⑤ Pre-Sandblasting
- ⑥ Cutting area
- ⑦ Stocking Area
- ⑧ Profile drilling & Cutting Area

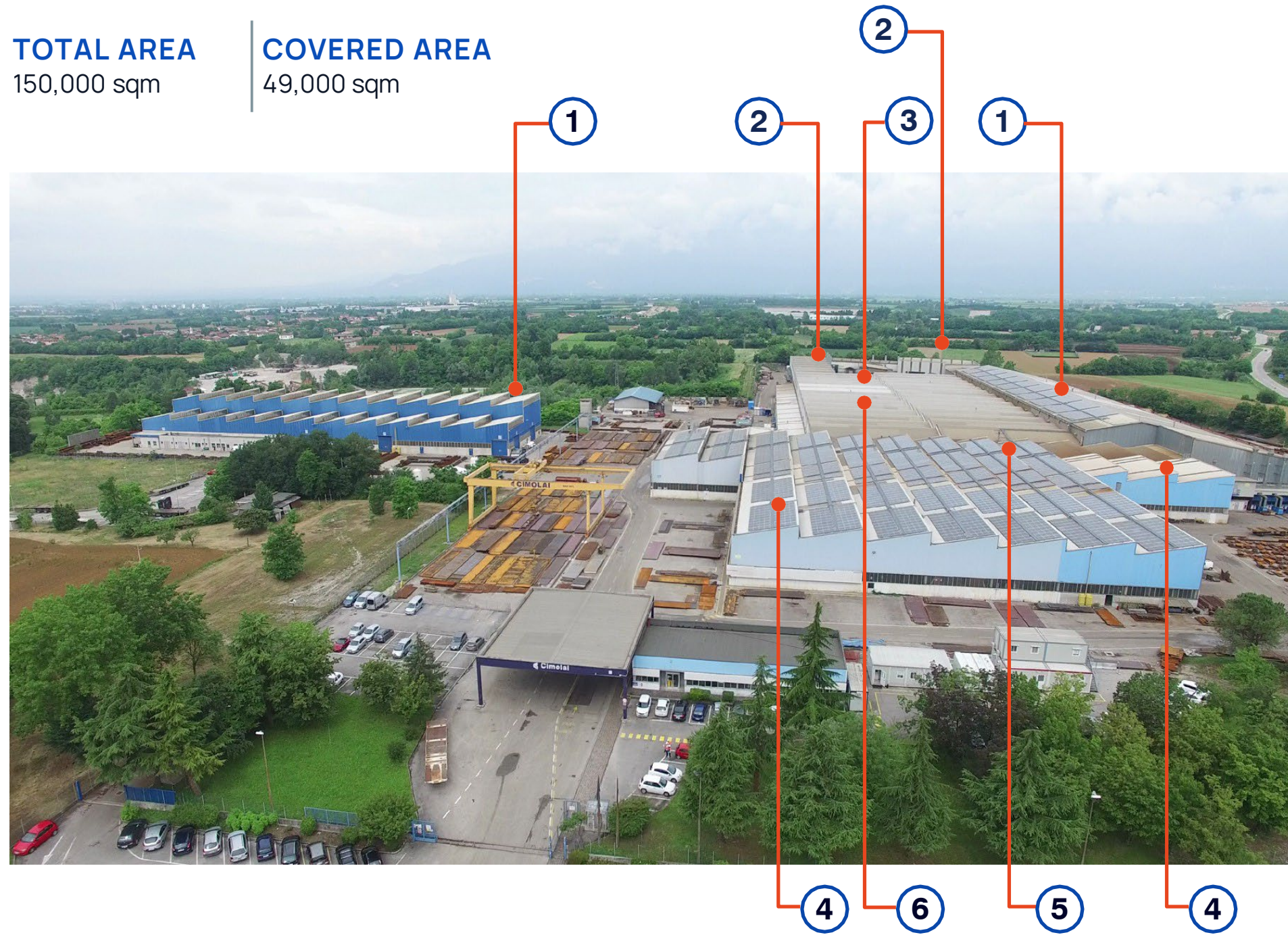


Facilities

ROVEREDO IN PIANO

TOTAL AREA
150,000 sqm

COVERED AREA
49,000 sqm



① Assembly & Saldatura

② Painting & Sandblasting

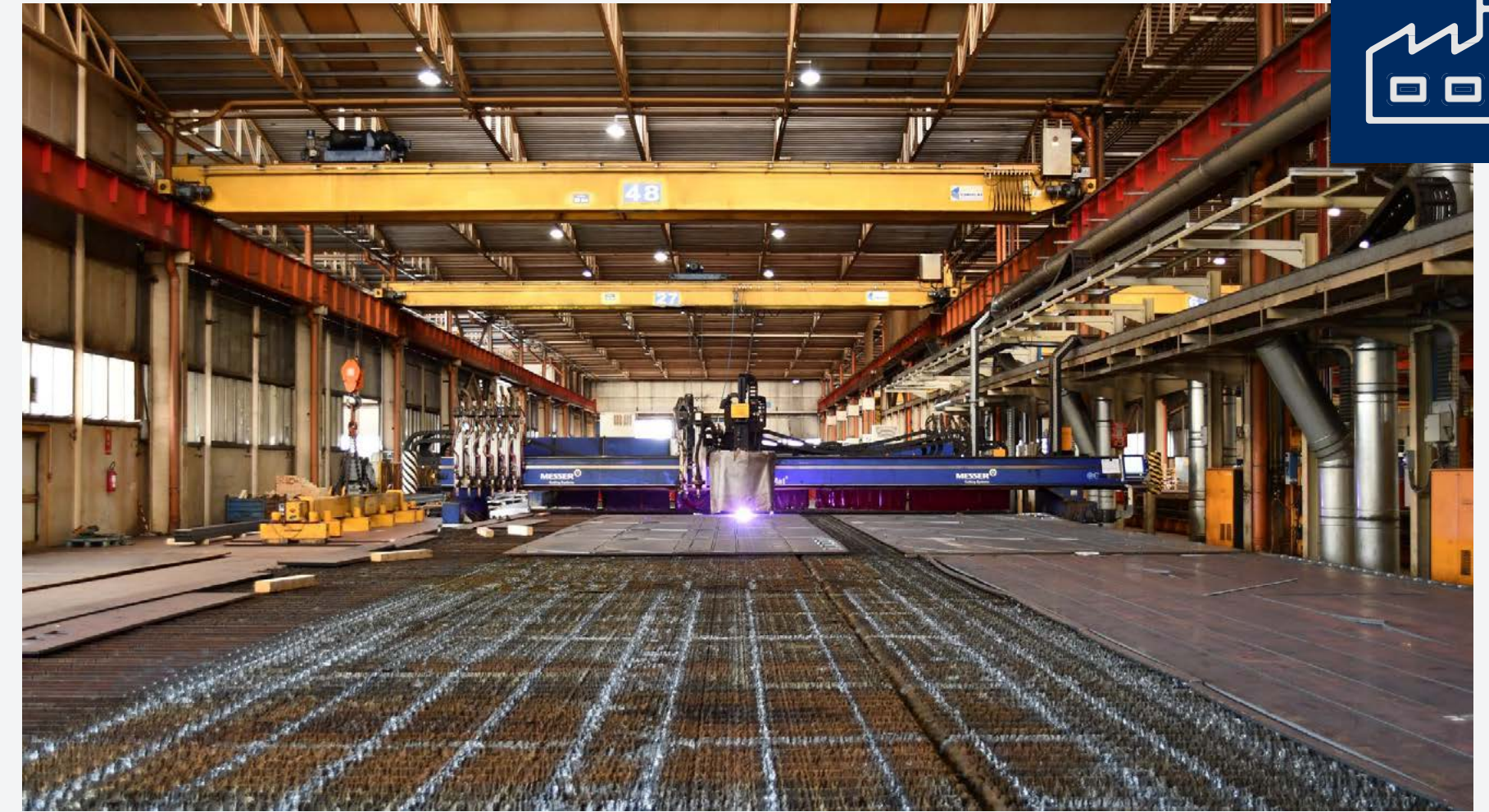
③ Drilling & Taglio

④ Machining

⑤ Pre-Sandblasting

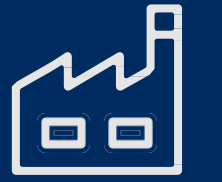
⑥ Cutting Area

Cimolai S.p.A.



Facilities

SAN GIORGIO DI NOGARO



SAN GIORGIO DI NOGARO

TOTAL AREA
180,000 smq

COVERED AREA
56,000 smq



- ① LSAW Pipes
- ② Marine Structures and Modules
- ③ Painting and Sandblasting
- ④ Panel line and Steel Structures



QUAY

length 200 m
- draft 5,5 m

SAN GIORGIO DI NOGARO 2 - AREA IMC

TOTAL AREA
97,000 sqm

COVERED AREA
16,000 sqm



- ① Steel Structures
- ② Process Equipments

Facilities

MONFALCONE



QUAY

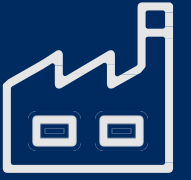
length 900 m -
draft 12 m

TOTAL AREA
280,000 sqm

COVERED AREA
59,000 sqm



- ① Machining
- ② Steel Structures
- ③ Painting and Sandblasting
- ④ Process equipments



Certifications

We have certified our products and systems in accordance with the most advanced standards.

From **Quality** to **Management**, **Health**, **Safety** and **Environment**: these are some of the areas in which we are committed to maintaining excellence standards, both in Italy and abroad.

[Discover our certifications](#)



Sustainability

43,5%

The percentage of electricity used that comes from renewable sources.

2.670

The tons of CO2 equivalent emissions avoided in 2023 thanks to the use of self-produced electricity.

14.741

Training hours (in 2023). +31.2% compared to the previous year.

73,3%

The self-produced electricity from internal photovoltaic systems used in the plants. The remaining part is fed into the grid.

Benefits

Available to employees: agreements, canteens, solidarity market, healthcare and insurance coverage, team-building events.

Cimolai Main Projects



| Bridges |

Bridges

Cimolai main projects



Chavanon Viaduct 2001
Merlines - France



Dora Baltea Viaduct 2004
Rondissone - Italy



Celtic Gateway Bridge 2006
Holyhead - UK



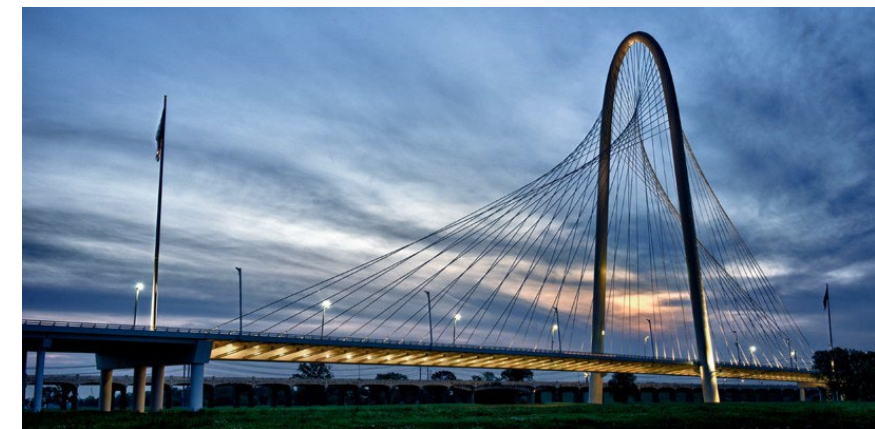
Viadotti Reggio Emilia 2006
Autostrada A1 - Italy



Darwin Bridge 2008
Padova - Italy



Bridge over the Ravine Fontaine 2009
St. Leu - Reunion Island



Margaret Hunt Hill 2010
Dallas - USA



Bridge of Peace 2010
Tbilisi - Georgia

Bridges

Cimolai main projects



Viaduct over Adige river 2010
Sud Valdastico - Italy



Ostiense Bridge 2010
Rome - Italy



Hans Wilddorf Bridge 2011
Geneva - Switserzerland



Chaban Delmas Bridge 2011
Bordeaux - France



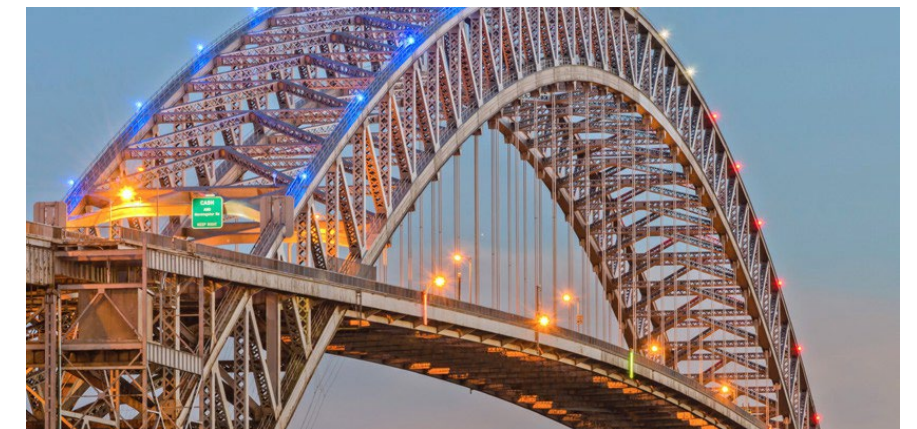
Pedestrian Bridge over the Rhone 2013
Lyon - France



Favazzina Viaducts 2013
Autostrada A3 - Italy



Adriatic Bridge 2016
Bari - Italy



Bayonne Bridge 2016
New York - USA

Bridges

Cimolai main projects



Bridge over Crati River 2018
Cosenza - Italy



Okavango Bridge 2022
Mohembo - Botswana



La Joya Bridge & Viaduct 2022
Arequipa - Peru



Nanay Bridge & Viaduct 2022
Iquitos - Peru



New Drini Bridge 2024
Kukes - Albania



Pont Anne de Bretagne Ongoing
Nantes - France



S.S. 106 Jonica Ongoing
Calabria - Italy



Ligne 17 Ongoing
Paris - France

| Stadiums & Arenas |

Stadiums & Arenas

Cimolai main projects



Millennium Stadium 1999
Cardiff - UK



Olympic Stadium 2004
Athens - Greece



Oval Arena 2005
Turin - Italy



FNB Stadium 2009
Johannesburg - South Africa



Città dello Sport 2009
Rome - Italy



Aviva Stadium 2010
Dublin - Ireland



National Stadium Warsaw 2011
Warsaw - Poland



National Stadium Brasilia 2013
Brasilia - Brazil

Stadiums & Arenas

Cimolai main projects



Dacia Arena **2015**
Udine - Italy



Stadio Louis Armstrong **2018**
New York - USA



Stadio Luxemburg **2019**
Luxemburg



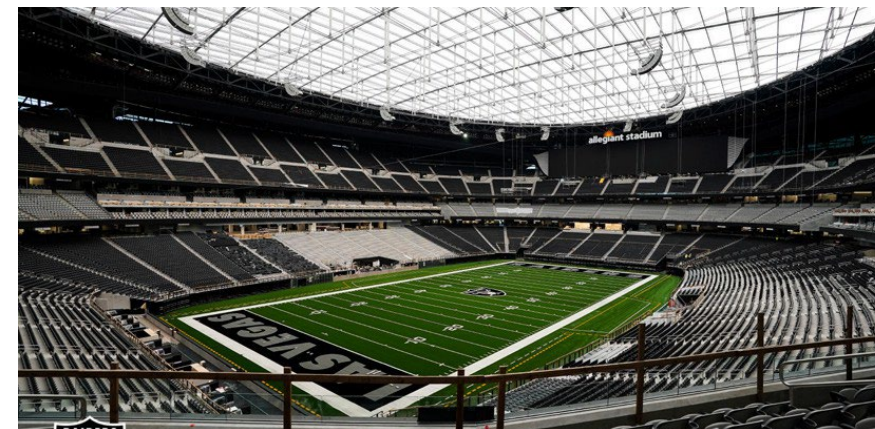
Roland Garros **2020**
Paris - France



Al Bayt Stadium **2020**
Al Khor - Qatar



AEK Stadium **2020**
Athens - Greece



Las Vegas Raiders Stadium **2020**
Las Vegas - USA



Arena Santa Giulia **2026**
Milan - Italy

| Buildings |

Buildings

Cimolai main projects



Airbus Assembly Hangar 2003
Toulouse - France



Sport City Tower 2006
Doha - Qatar



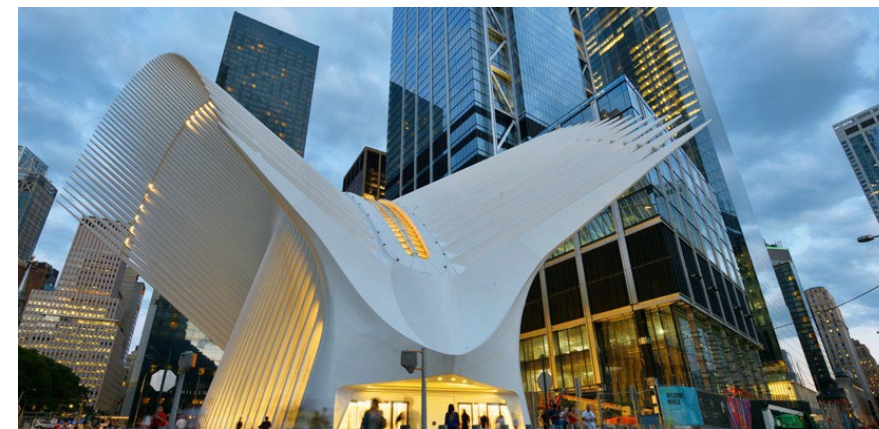
Airport Maintenance Hangar 2010
Doha - Qatar



Adnoc corporate HQ 2010
Abu Dhabi - UAE



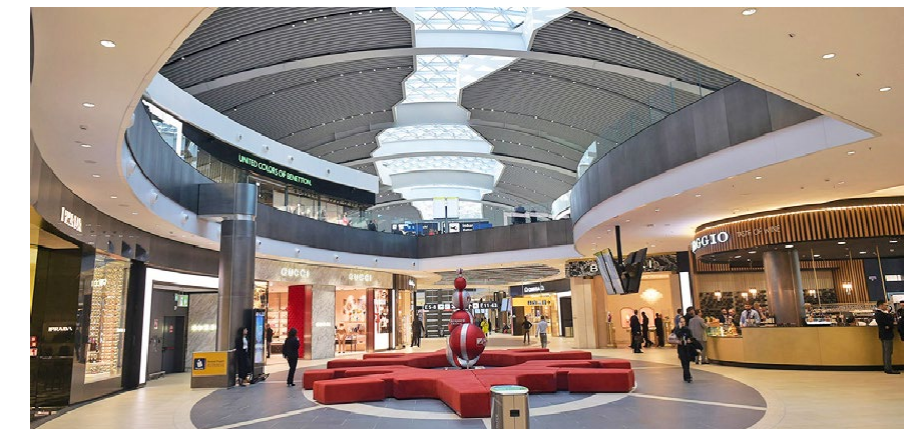
Stazione Medio Padana 2013
Reggio Emilia - Italy



WTC New Transportation Hub 2015
New York - USA



New Safe Confinement 2015
Chernobyl - Ukrain



New terminal Fiumicino 2016
Rome - Italy

Buildings

Cimolai main projects



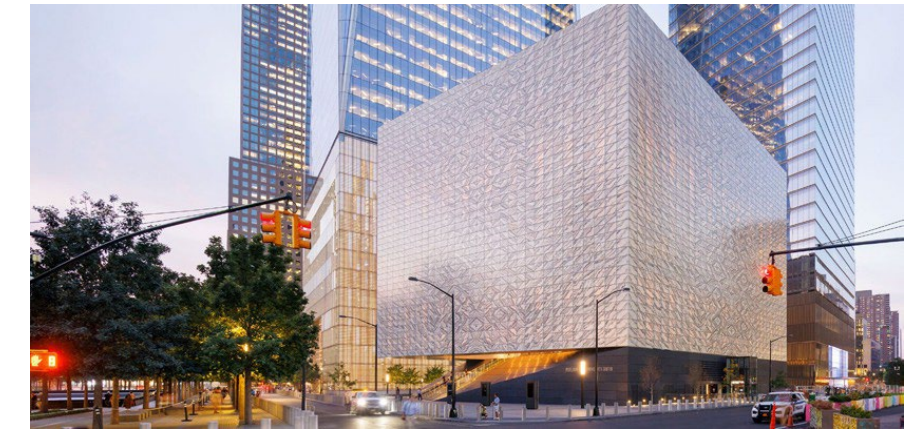
Pavillon 37 - Bologna Fiere 2018
Bologna - Italy



Hudson Yards - Vessel 2019
New York - USA



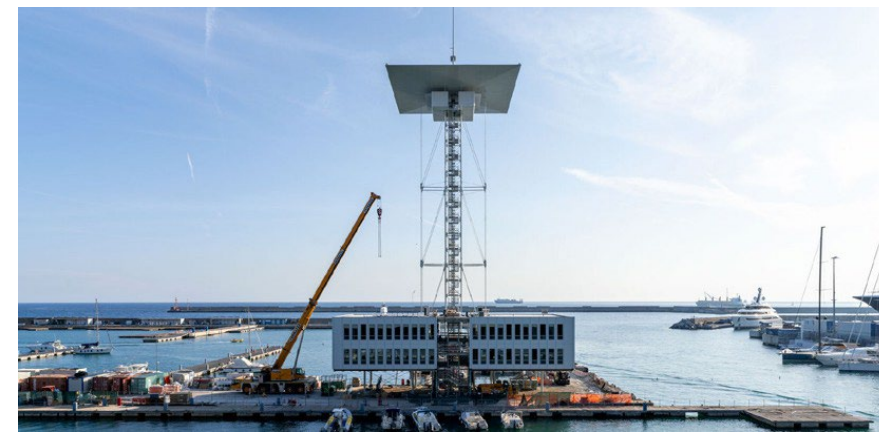
Al Wasl Plaza 2021
Dubai - UAE



Perelman Performing Art Center 2022
New York - USA



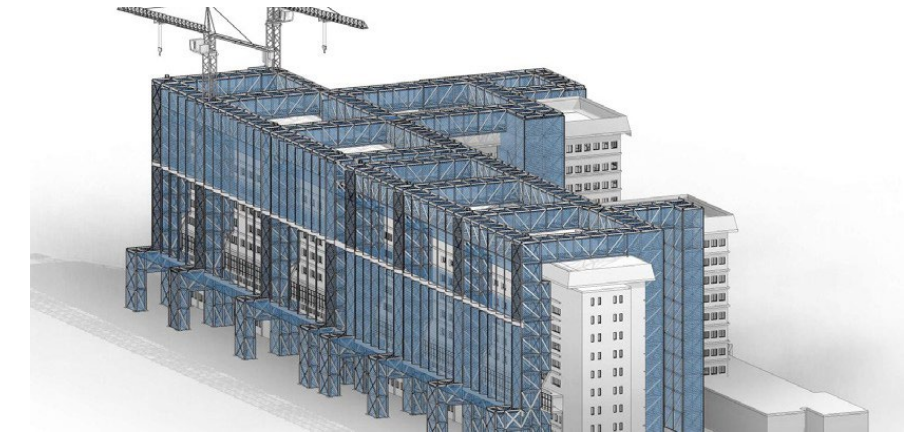
CERN New Gateway 2022
Geneva - Switzerland



Nuova Torre Piloti 2025
Genoa - Italy



Stazione Sesto San Giovanni ongoing
Milan - Italy



Ospedale Borgo Roma ongoing
Verona - Italy



Maritime & Offshore

Maritime & Offshore

Cimolai main projects



Seaburn - Odyssey - Sojoburn **2010**



MO.S.E. Lido Port Entrance **2014**
Venice - Italy



Gates on Panama Canal **2016**
Panama



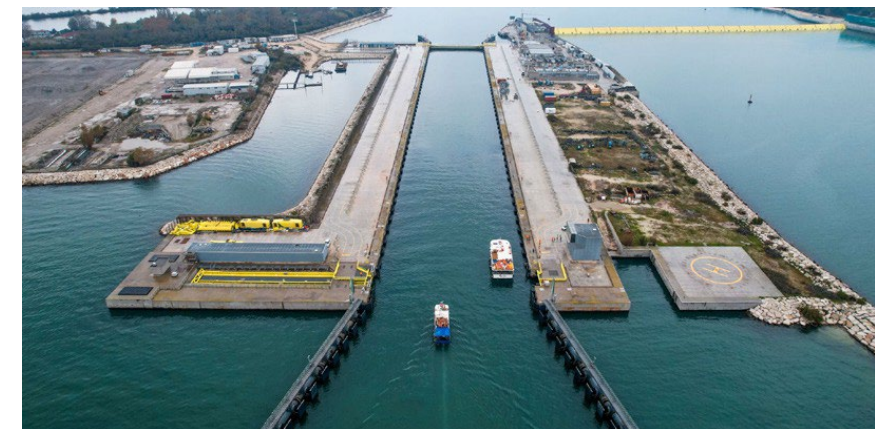
Barca Porta **2020**
Casablanca - Morocco



Barge Arcalupa **2020**



Traghetto RFI **2020**
Italy



Malamocco Gates - MO.S.E. **2023**
Venice - Italy



SDO-Surs - Olterra **2023**



Energy

OIL & GAS

Energy

Cimolai main projects



TSL for Pioneering Spirit 2015



Moduli onshore 2015
Upper Zakum - UAE



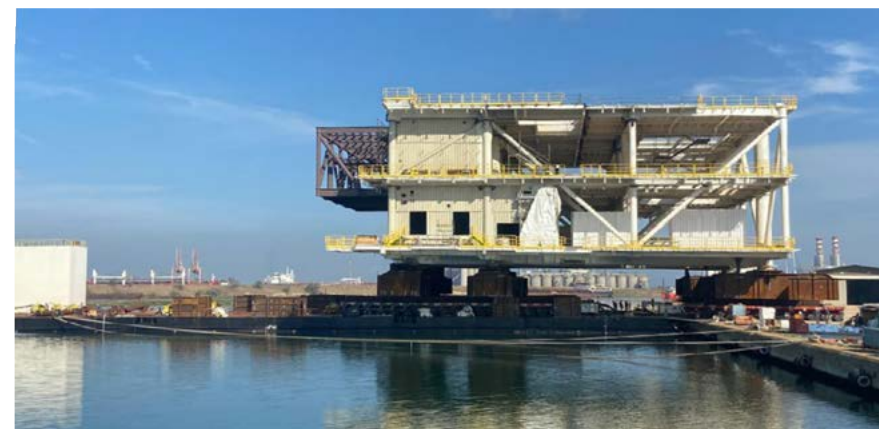
OnShore Strcutures Tengiz 2017
Tengizchevroil - Kazakhstan



Pioneering Spirit - JLS Beam 2016
Allseas - Olanda



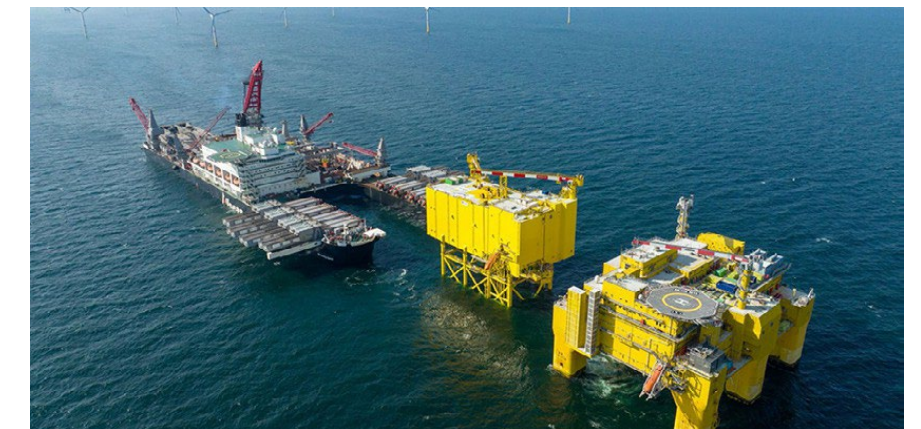
Plaquemines 2020
Louisiana - USA



Onshore platform 2021
Ravenna - Italy



Moduli LNG Canada 2021
Kitimat - Canada



Dragados 2WG Projects ongoing

| Aerospace |

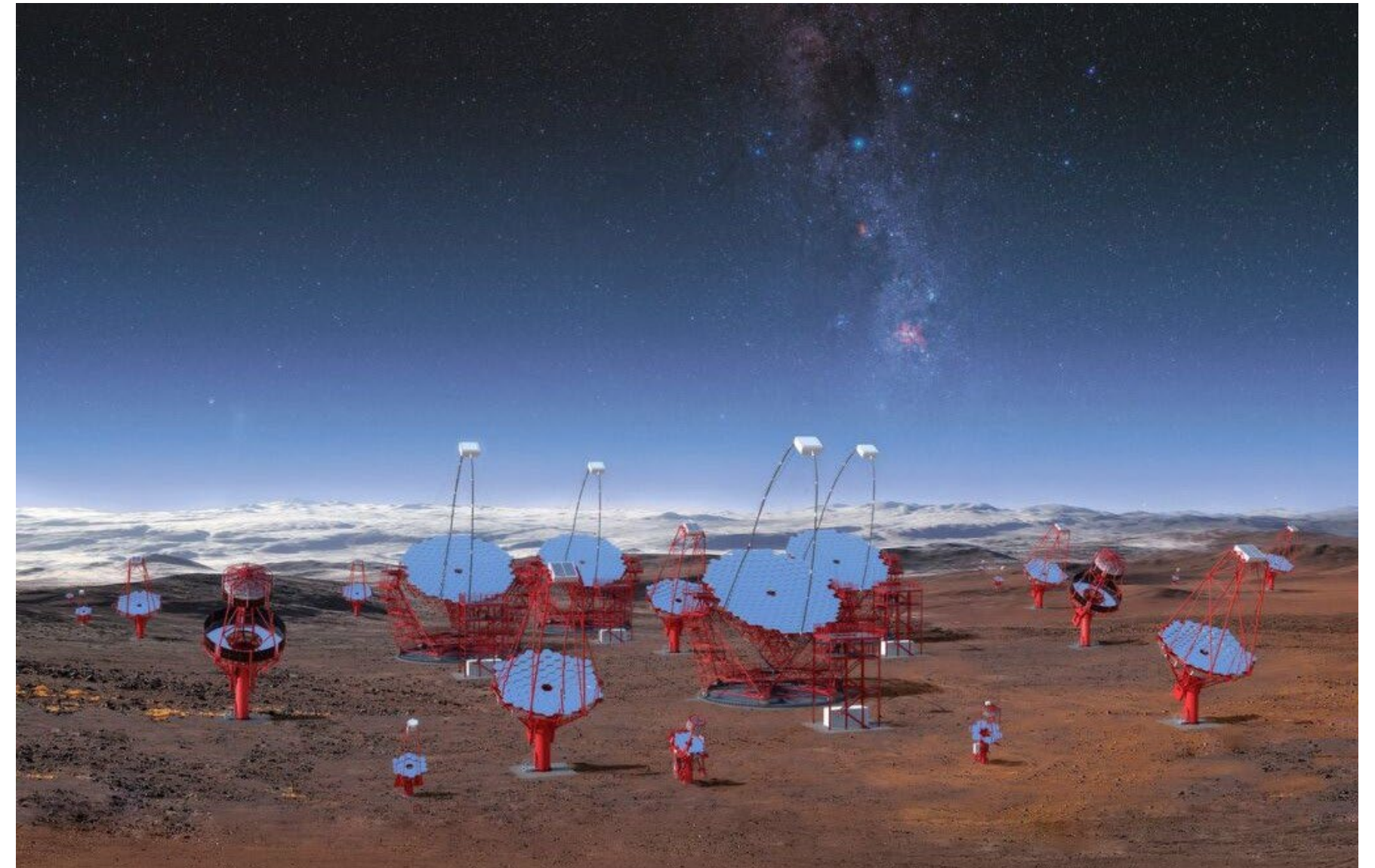
Aerospace

Cimolai main projects



ELT - Extremely Large Telescope
Cerro Armazones - Chile

Ongoing



Large Size Telescopes - CTA+
Cerro Armazones - Chile

Ongoing

An aerial view of a large industrial yard, likely a pipe manufacturing or storage facility. Several long, dark-colored pipes are laid out in parallel rows on the ground. In the background, there are various pieces of construction equipment, including a yellow crane, a red forklift, and a blue truck. The scene is set in an open, paved area with some buildings and structures visible in the distance. The entire image has a blue tint.

| Pipes Division |

Pipes Division

Since 2003, Cimolai has been a major producer of **LSAW steel pipes of large diameters** and heavy wall thicknesses for Offshore structures and the Oil and Gas industry in general, as well as fabricating jacket structures for renewable energy.

The factory in San Giorgio di Nogaro is equipped by its own quay for mooring sea vessels and barges, which is 200 m in length and has about 7 m water depth.

Components of virtually any size and weight can be handled by the various lifting equipment installed, such as a 350 t capacity mobile gantry crane, Self-Propelled Multi-Wheel Trailers (SPMT), telescopic and crawler cranes, strand jacks and lifting towers.



Production Range

BENDING CAPACITY

6.000 ton



PRESS AND ROLL BENDING

PRODUCTION RANGE STRUCTURAL PIPES

Outside Diameter: 457 mm - 2.032 mm (18" - 80")

Wall Thickness: 9.53 mm - 95 mm (3/8" - 4")

Max Length: 15,100 mm (49.54 ft)

Line pipe, according to API 5L Standards: PSL2, Sour Service, Offshore Service (from Gr.B to X100)

Process pipe, according to ASTM Standards: A671, A672, A691

Pipes for shell, boiler: P355 - P460 NL1/NL2, SA302 Gr.B

Structural onshore acc. to EN Standards 10219, 10210, 1090 EXC 4: yield strength 355 ÷ 830 Mpa

Structural offshore acc. DNVGL-OS-C401, NORSOK, EEMUA 158, API 2B according to EN Standards: **Circumferential welding activities to increase the total length, double longitudinal welds for higher OD.**

Pipes Division





CIMOLAI